



SafetyResourcesInc.

Safety Bulletin

Special points of interest:

- School's Starting—Protecting Our Children
- Do You Know What To Do? - Severe Weather Safety
- Safety—The Bottom Line
- Upcoming Events & News

**Proud Sponsor of the
Hoosier Safety
Council**



**Come join today.
1-800-537-5346**

www.hoosiersafetycouncil.org

Volume 1 Issue 1

August 2003

School's Starting — Protecting Our Children

By: Dan Brennan, Safety Specialist, Safety Resources, Inc.

That time of the year is upon us once again. Children all over the country will be making their daily journey to school every morning. Whether waiting on street corners for their buses, jumping on their bicycles, or placing their right foot in front of their left; children of all ages will be susceptible to a brief period of danger as they make their way to an education.

Early morning roads will become much more crowded as bikes, pedestrians, and cars join the rest of us as we rush to work and they go to school. As drivers, we must always be watchful, taking extra steps to look out for children on their

way to school. Children will often dart from behind parked cars directly into oncoming traffic. When driving through school zones you should slow down, and expect the unexpected.

More than 1/3 of all pedestrians injured by motor vehicles are children – approximately 75,000 – all of whom under the age of 15.



By taking the initiative to be more alert on the road at all times and by recognizing the presence of kids at play or at school, we can make this world a safer place for those who matter most, the children.

“drivers, we must always be watchful, taking extra steps to look out for children on their way to school.”

Do You Know What to Do? - Severe Weather Safety

By: John Webb, Safety Specialist, Safety Resources, Inc.

The height of summer season is upon us. The kids are out of school, families are traveling on vacation, people are mowing their lawns, and beautiful flowers are growing. For most people this is the best time of year. However, the best time of year can quickly turn bad. Summer time is notorious for thunderstorms, tornados, and flash floods. The following are some severe weather tips that will help to keep you and your

family safe in the event of a severe weather emergency.

Thunderstorms

If you are outdoors during a thunderstorm, the first thing to remember is to seek shelter. Go to the nearest indoor facility that you can find. If you are not sure if you have time to make it safely to an indoor shelter or not, remember the 5 second rule. Once you see a bolt of lightning

count the number of seconds before you here the thunder. Every 5 seconds equals one-mile. So if you see a bolt of lightning and you count 15 seconds before you here thunder then the storms is about 3 miles away. If you do not have time to make to an indoor shelter, do not seek shelter under isolated trees, drop any metal objects that you might be carrying, drop to your knees, but do not lay flat on the



“Remember; never try to out run a tornado. Some tornados can travel up to 60 miles per hour.”

Do You Know What to Do? - Severe Weather Safety

(cont)

ground.

Tornados

In the event of a tornado seek shelter immediately. If your home has a basement, go there as soon as possible. If you do not have a basement, go to the inner most room of your house. Crouch down and protect your head with your hands, or if time allows cover yourself with couch cushions or a bed mattress. This will help protect you from fall debris. If you are outdoors or traveling during a tornado, seek

protection in a low spot, such as a ditch or ravine. Remember; never try to out run a tornado. Some tornados can travel up to 60 miles per hour.

Flash Floods

Flash Floods claim many lives every year. In the event of a flash flood evacuate to higher ground. Do not drive through flood roads. A car can become buoyant in 6 to 12 inches of water. Stay out of areas that are possible for flooding, such as low areas, canyons, ditches, lakes,

and rivers. If you are advised to evacuate the area by local authorities do so immediately.

Summer time is a fun time to be had by all. Just remember to take precautions and be prepared for emergencies that could happen.

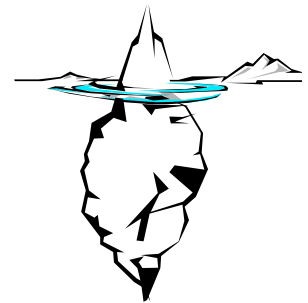
Safety: The Bottom Line

By: Marc Brewer, Safety Specialist, Safety Resources, Inc.

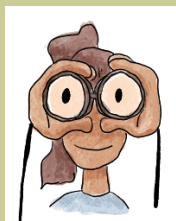
“remember that the next time you’re looking for a way to put money back into your company, look at putting it into safety. You need to look at safety as an investment, not an expense.”

One of the biggest crusaders of safety is insurance companies right now, giving better breaks to companies that have an effective safety program in place. As I’m sure everyone knows, insurance premiums are one of a company’s biggest expenses, along with accidents or injuries paid out of pocket, but this goes to show just how related your bottom line is to your safety program. I always like to use the example of an iceberg because the majority of it is below the surface or “hidden”. Likewise, most of the cost of an accident is “hidden”. It’s everything

from lost time by not only the involved but also to any coworkers that have to stop working due to the accident or injury, to lost product or equipment damage, time to retrain a replacement, and a rise in insurance premiums. Keeping your company active with safety is your best bet to reduce these hidden dangers. So as a final note, remember that the next time you’re looking for a way to put money back into your company, look at putting it into safety. You need to look at safety as an investment, not an expense.



the majority of accident costs are below the surface or “hidden”.



**CHECK OUT OUR
NEW ADDRESS**



Safety Resources, Inc.
2216 W 60th St.
Indianapolis, IN 46228

Phone: 317-202-2420
Fax: 317-202-2430

information@safetyresources.com

We're on the web!
www.safetyresources.com

**Looking to
enhance your
safety program?
Try one of the
best
Safety Manuals**



**Interactive Safety
Manual on CD-Rom**

1-800-641-5990
www.csp-cd.com



SafetyResourcesInc.

Experience → Confidence → Solutions

EXPERIENCE

Safety Resources, Inc. is a team of dedicated professionals whose practice is the structure and implementation of workplace safety, corporate loss control and regulatory compliance. Every member of our staff not only holds highly technical degrees but they have practical "in-field safety" experience. We bring a reality of what works and what does not to every situation.

CONFIDENCE

As consultants, we think strategically to accomplish safety goals within the big picture of your business. We speak your language and understand the performance and budget constraints that affect your decision making. As specialists in our field, we'll think through your safety and loss control issues with you.

SOLUTIONS

SRI recognizes that clients not only require answers to their questions, but also seek direction on ways to anticipate problems before they arise. "Tell me what works" is what you want to know. SRI delivers "how to".

SRI's Upcoming Events & News

OSHA 10 General Industry Outreach Course

- August 19-20, 2003
- Course Cost \$185
- Located in Indianapolis, IN

TO REGISTER

Call 1-800-641-5990 or 317-202-2420

Online: www.safetyresources.com



**Are you in compliance with your
industry standards?
Let SRI help you figure it out**